

A worker in a high-visibility vest and hard hat is sweeping a road surface next to a dump truck. The truck has "OSW EQUIPMENT & REPAIR, LLC." and a logo on its side. A white SUV is parked in the background. The scene is overlaid with a blue gradient.

# Reconnect West Seattle Implementation Plan Final Report

Q4 2022



**Seattle**  
Department of  
Transportation

# Reconnect West Seattle – Vision

*Achieve similar levels of travel across the Duwamish to those seen before the closure of the High-Rise Bridge, while reducing the environmental injustices that impact communities in the Duwamish Valley.*

## Goals

1. Address increased traffic volumes and other impacts to neighborhoods along detour routing
2. Reimagine West Seattle transportation through mode share shifts and travel pattern changes throughout the peninsula
3. Understand community concerns and obtain feedback on projects, services, and facilities needed for West Seattle travelers to shift to non-car modes
4. Develop a comprehensive implementation plan that incorporates community feedback to ensure travelers reach their desired destinations
5. Regularly communicate with community in the coming months and years as traveler patterns change to address transportation needs

# Community-led Process

- In March-June 2020, SDOT collected and reviewed project ideas from community
- In July and August, project ideas were then prioritized through 6 community surveys
- The surveys were promoted in underserved communities with the help of DON and community liaisons

## Neighborhood Surveys

- SODO
- Georgetown
- South Park
- West Seattle (Roxhill, Highland Park, Riverview, and South Delridge)

## Network Strategy Surveys

- Freight\*
- Bike



\*Prioritization by the Seattle Freight Advisory Board



# Reconnect West Seattle Implementation Plan

- Top-ranking projects were included in the Implementation Plan for construction in either 2020 or 2021
- The Plan was shared with the West Seattle Bridge Community Task Force on September 9, 2020
- SDOT collected input from community and created additional improvements for construction in 2022
- Reconnect West Seattle program will end once the Implementation Plan projects have been completed
- No new projects are being added to the program
  - Some projects will be completed in 2023



**PROJECTS COMPLETED OR IN PROGRESS THROUGH AUGUST 2020**

Since March, we implemented 170 changes to support communities affected by the West Seattle Bridge closure to the best of our ability and preserve and enhance public safety. These improvements are the foundation that Reconnect West Seattle's community-identified projects will build upon.

Below is a list of projects completed or in progress through August 2020 that were included on the neighborhood table or were done to improve mobility for people traveling by employer shuttle, carpool, transit or water taxi.

Project	Location	Owner	Status
Delridge Route Signal Improvement	Create new signal timing plans for SR 520/Michigan St and other delridge route corridors that can be implemented when significant congestion occurs	South Park	SDOT staff
4th Ave S & Michigan Signal Improvement	Improve signal timing along delridge route, 4th Ave S and Michigan St	South Park	SDOT staff
S. Marginal Way Signal Improvement	Improve signal timing at S Marginal Way, 4th Ave S, and 1st Ave S intersection	Georgetown	Community Request, RSD Town Hall
S. Michigan St Traffic Improvement	Make signal improvements for the eastbound and westbound traffic on S Michigan St through Georgetown	Georgetown	Community Request
S. Michigan St Signal Improvement	Make S Michigan St intersection Transportation System improvements	Georgetown	Georgetown Mobility Study
Orchard/Delridge Signal Improvement	Update signals to address traffic backups at Orchard St. and Delridge Way SR 520	West Seattle (Highland Park, Riverdale, S. Delridge, Rainier)	Community Request, IFAC letter
Low Bridge Access	Low Bridge Access to Low Bridge	Philly, Employer Shuttle, Carpool	Community and Agency Request
Transit Lane and signal priority	Installed bus lanes on Spokane Street and Delridge Way	Transit (Bus)	SDOT and Metro
Transit Service	Revised bus service to accommodate High Bridge closure. Metro published a West Seattle Bridge Closure Transit Action Plan	Transit (Bus)	Metro
Additional Water Taxi service	Revised RFP for additional boat, holding source needed	Transit (Water Taxi)	Metro

# Reconnect West Seattle Update – Q4, 2022

Since March 2020, we have completed:

- **64 of 70** RWS Implementation Plan (2020-2022) projects
- **56 of 64** Home Zone project elements in South Park, Highland Park, and Georgetown
- **319** RWS traffic mitigation projects

Remaining projects will be completed in 2023.

# 2022 RWS Implementation Plan projects

Updated: 12/8/22

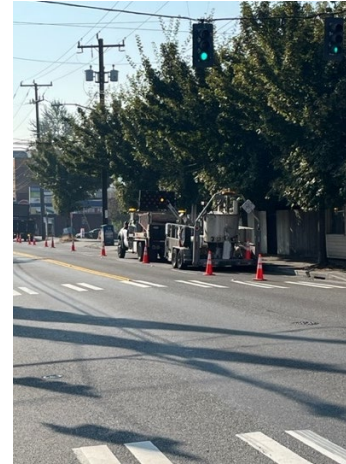
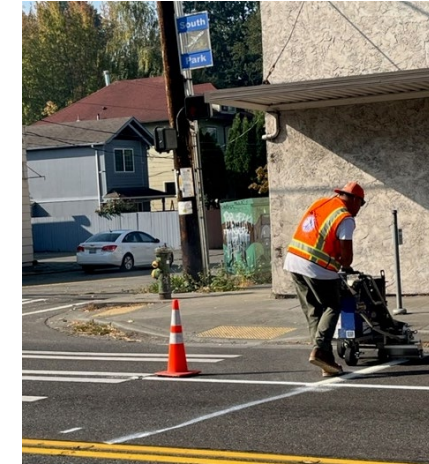
Delivery Year	#	Project Name	Project Description	Status
2022	22-84	S Albro Pl Traffic calming	Radar feedback speed sign trailer rental	Complete
2022	22-77	S Hardy St Sidewalk Repairs	Repair sidewalks on S Hardy St e/o S Albro Pl	Complete
2022	22-22	14th Ave S and S Cloverdale St Signal	Install crossing upgrades at 14th Ave S and S Cloverdale St	Complete
2022	22-73	17th Ave SW and SW Henderson St RRFB	Install RRFB at intersection of 17th Ave SW and SW Henderson St	Complete
2022	22-95	Sylvan Way SW Low-Cost Sidewalk	Install low-cost walkway or other pedestrian connection on Sylvan Way SW s/o SW Holly St	Complete
2022	22-58	16th and Cambridge Pedestrian Crossings	Improve crossing at 16th Ave SW and SW Cambridge St	Complete
2022	22-24	Dallas Ave S Sidewalk Improvements	Repair sidewalks on Dallas Ave S e/o 10 <sup>th</sup> Ave S	Design
2022	22-25	Lighting at Cesar Chavez Park	Install new or upgrade existing lighting near Cesar Chavez Park on 7 <sup>th</sup> Ave S	Complete
2022	22-30	South Park Skate Park Lighting	Install new or upgrade existing lighting on S Cloverdale St w/o 8 <sup>th</sup> Ave S	Complete
2022	22-00	14th Ave S safety project	Corridor improvements to increase visibility and slow down drivers on 14th Ave S	Complete



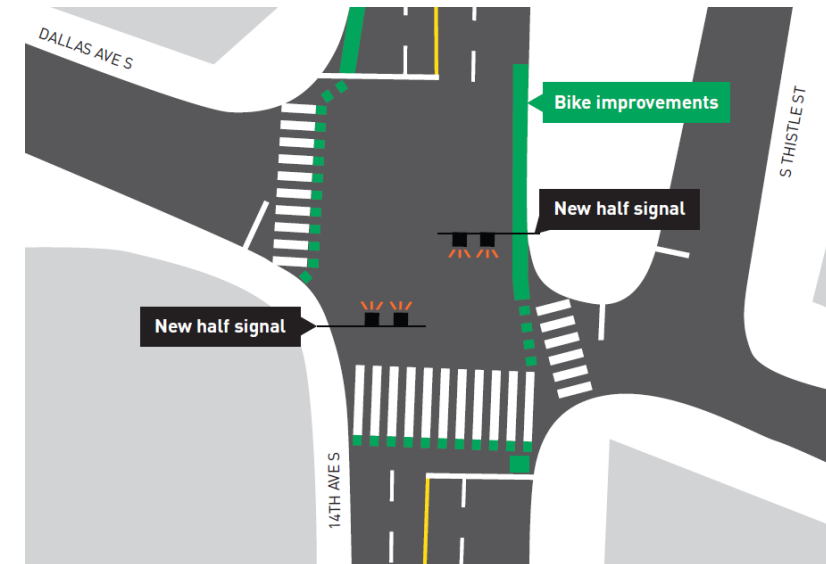
# RWS Implementation Plan highlights – Q4, 2022

- Completed 14<sup>th</sup> Ave S Safety Corridor Project
- Dallas Ave S and 14<sup>th</sup> Ave S intersection improvements at 100% design
- Vision Zero intersection daylighting projects (11)

14<sup>th</sup> Ave S Safety Corridor improvements



Dallas Ave S and 14<sup>th</sup> Ave S intersection improvements graphic



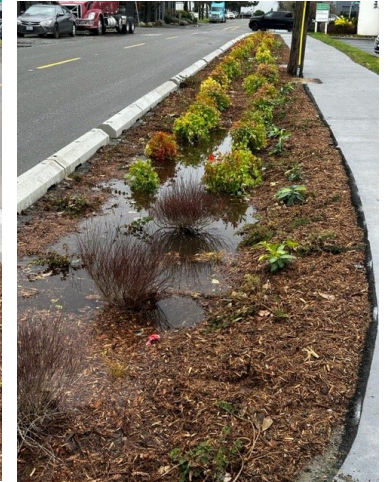
Intersection daylighting improvements



# Home Zone project elements completed/in construction - Q4



S Concord St between 5th Ave S and 7th Ave S (plantings to come)



6<sup>th</sup> Ave S and S Orcas St with heat-reducing grey paint on the asphalt walkway



Corson Ave S at S Michigan St channelization



SW Webster St at 12<sup>th</sup> Ave SW

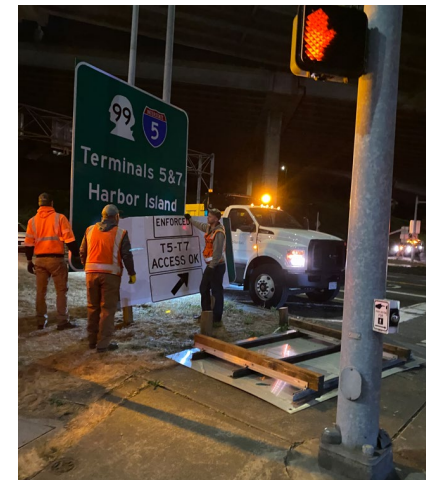


# RWS traffic mitigation projects completed – Q4

- Completed nine overhead sign replacements in Q4 (bringing the total to 34)
- Completed 1.45 lane miles of paving in West Seattle (bringing us up to 10.45 of 12.2 anticipated lane miles)



Repaving Occidental Ave S



Overhead sign replacement

# Upcoming Projects

## **Upcoming Reconnect West Seattle projects:**

- Dallas Ave S sidewalk repair design
- ADA curb ramp construction at Chelan 5-way intersection

## **7 projects scheduled for late 2022/2023 delivery**

### **Construction has begun:**

1. Corson Ave S/S Michigan St/S Bailey St raised pedestrian crossing in the slip lane and sidewalk repair project
2. 12<sup>th</sup> Ave SW/SW Holden St new pedestrian signal

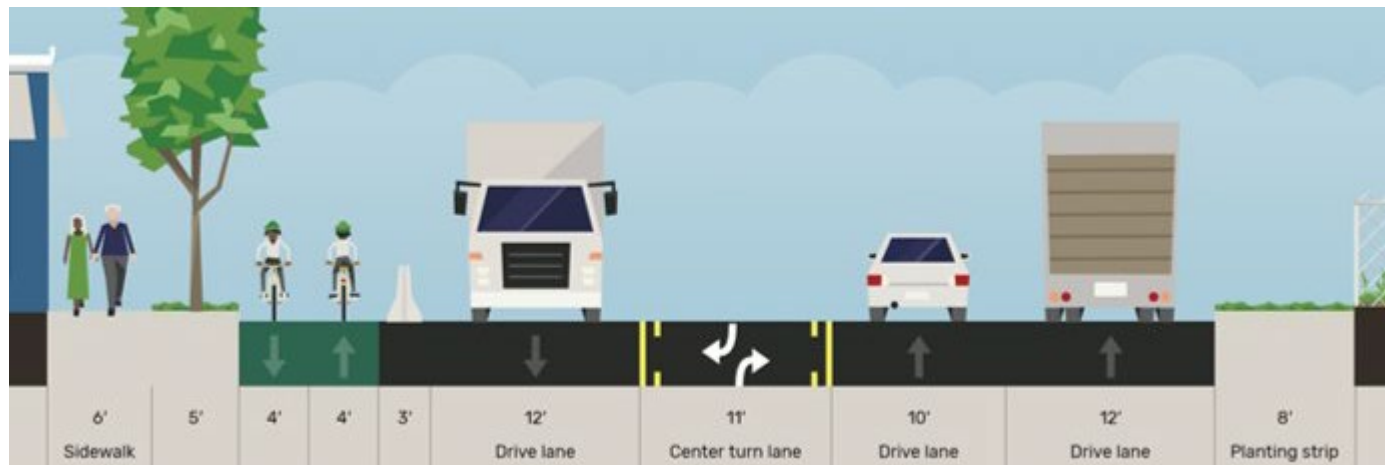
### **Construction will begin in 2023:**

1. 4<sup>th</sup> Ave SW/SW Roxbury St/Olson Way SW intersection improvements
2. Dallas Ave S/14<sup>th</sup> Ave S pedestrian signal and NGW connection improvements
3. SW Holden St/Highland Park Way SW permanent signal improvements
4. W Marginal Way safety corridor improvements
5. Duwamish Longhouse permanent signal and sidewalk

# RWS project update

## West Marginal Way Safety Corridor improvements - 2021 RWS project

- Data collection analysis and findings are complete; results summary to community soon
- Anticipate construction in 2023
- Inquiry about the project, email: [westmarginalway@seattle.gov](mailto:westmarginalway@seattle.gov)



*Planned street redesign for West Marginal Way SW - looking north of the SW Idaho St trail crossing*



# Upcoming Home Zone project elements

Complete delivery of Home Zone project elements:

- S Trenton St conveyance swale and wheel stop
- SW Webster St walkway
- 14<sup>th</sup> Ave SW conveyance swale and walkway
- 9<sup>th</sup> Ave SW conveyance swale and walkway
- S Elmgrove St conveyance swale and walkway
- Highland Park Home Zone project update – keeping the existing RRFB at 11<sup>th</sup> Ave SW and SW Holden St as well as installing pedestrian signals at 12<sup>th</sup> Ave SW and SW Holden St for the new Neighborhood Greenway



SW Holden St and 11<sup>th</sup> Ave SW Rectangular Rapid Flashing Beacon (RRFB)

# Mobility Action Plan

## Flip Your Trip Participant Statistics (final)

- Total Registrations: 11,256
- Total Transit GO Enrolled Users: 5,489
- Activated users: 3,884
- Total Trips Redeemed: 41,481
- Final campaign in the Transit GO Ticket with the goal of sustaining transit ridership with the bridge reopening in process till 10/31
- Survey: 1,366 responses (12% response rate)

## Flip Your Trip Updates

- Evaluation Report is available soon

## Key Flip Your Trip Survey Results

Based on 1,336 Responses



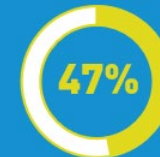
Would recommend Flip Your Trip (FYT) to others



Said FYT helped them feel more confident and/or knowledgeable using travel options



Said FYT gave them financial resources that made travel options possible



Report using the bus more often because of FYT+ 37% report using the water taxi more often

Many people used travel options for the first time ever (or the first time in a long time)



**512**  
new bus riders



**465**  
new water taxi riders



**328**  
new rail riders



**Seattle**  
Department of  
Transportation

# Reconnect West Seattle program closure

- Since the West Seattle High Bridge has reopened, the Reconnect West Seattle program has concluded.
- Contact SDOT if you have questions about any of the following projects:
  - 4<sup>th</sup> Ave SW / SW Roxbury St / Olson Way SW intersection improvements
  - Dallas Ave S / 14<sup>th</sup> Ave S intersection improvements
  - Highland Park Way SW and SW Holden St permanent intersection improvements
  - Duwamish Longhouse permanent signal
  - W Marginal Way SW Safety Corridor improvements
  - Home Zone conveyance swale and wheel stop projects
- To contact SDOT, email [684-road@seattle.gov](mailto:684-road@seattle.gov) or call 684-ROAD





# Reporting on the 5 Implementation Plan Goals

- **Goal #1:** Address increased traffic volumes and other impacts to neighborhoods along detour routing.
- We completed or are working on **96% of planned detour route projects** within a quarter-mile of the detour routes to mitigate increased traffic volumes.
- Once all projects are complete, this will be 100%.

Updated: 10/7/22

# Reporting on the 5 Implementation Plan Goals

- **Goal #2:** Reimagine West Seattle transportation through mode share shifts and travel pattern changes throughout the peninsula.
- We completed or are working on **95% of the planned mode shift projects** that support people walking/rolling, biking, and using transit.
- Once all projects are complete, this will be 100%.

Updated: 10/7/22

# Reporting on the 5 Implementation Plan Goals

- **Goal #3:** Understand community concerns and obtain feedback on projects, services, and facilities needed for West Seattle travelers to shift to non-car modes.
- We completed or are working on **82% of the planned community-sourced projects** proposed through targeted outreach with historically underserved communities.
- Once all projects are complete, this will be 100%.

Updated: 10/7/22



# Reporting on the 5 Implementation Plan Goals

- **Goal #4:** Develop a comprehensive implementation plan that incorporates community feedback to ensure travelers reach their desired destinations.
- We completed or are working on **92% of the total planned projects received from the community** included in Reconnect West Seattle Implementation Plan.
- Once all projects are complete, this will be 100%.
- The status of all Implementation Plan projects is included in the Appendix.

Updated: 10/7/22

# Reporting on the 5 Implementation Plan Goals

- **Goal #5:** Regularly communicate with community in the coming months and years as traveler patterns change to address transportation needs
- We've attended or hosted **3 community meetings during this quarter** (October 1, 2022 – December 31, 2022) and 318 community meetings and events total since the beginning of the bridge closure.

Updated: 10/7/22

# Questions?

## Stay in touch:



[westseattlebridge@seattle.gov](mailto:westseattlebridge@seattle.gov)



206.400.7511



[www.seattle.gov/transportation](http://www.seattle.gov/transportation)





From the entire SDOT Team:  
**Thank you!**



# Appendix: Project Status Lists

# Ongoing Project List

Delivery Year	Survey Category	#	Project Name	Project Description	Status
Ongoing	Georgetown Survey	156	1st Ave S Bridge Signal Improvements	Improve signal timing at East Marginal Way S, 4th Ave S, and 1st Ave S	Ongoing
Ongoing	Georgetown Survey	182-1	S Michigan St Signal Improvements	Improve signal progression for S Michigan St	Ongoing
Ongoing	Georgetown Survey	182-2	S Michigan St Signal Improvements	Improve signal timing	Ongoing
Ongoing	Georgetown Survey	46920	S Michigan St ITS Improvements	Intelligent Transportation System (ITS) improvements	Ongoing
Ongoing	SODO Survey	24	SODO Drainage Improvements	Work with Seattle Public Utilities to monitor drainage and ponding issues	Ongoing
Ongoing	South Park Survey	139	4th Ave S and S Michigan St Signal Improvements	Improve signal timing for S Michigan St	Ongoing
Ongoing	South Park Survey	143	Detour Route Signal Improvements	Improve signal timing on detour routes	Ongoing
Ongoing	Freight Survey	F09	Alaskan Way Signal Improvements	Improve signal timing at Madison St and Marion St	Ongoing
Ongoing	Freight Survey	F023	East Marginal Way S Access Restrictions	Assess access restrictions between S Spokane St and S Atlantic St	Ongoing

Updated: 12/8/22

# Ongoing Project List

Delivery Year	Survey Category	#	Project Name	Project Description	Status
Ongoing	MAP Survey	N/A	Low Bridge Access	Evaluate continued access to Low Bridge	Ongoing
Ongoing	MAP Survey	N/A	Employer Coordination	Work with employers to maintain and support work-from-home options	Ongoing
Ongoing	MAP Survey	N/A	Expand shared employer shuttles	Through King County Metro's Shared Employer Shuttle Program expand access to shuttles for smaller employers	Ongoing
Ongoing	MAP Survey	N/A	Evaluate New/Revised Transit Connections	Evaluate new/revised routes to reflect new trip patterns	Ongoing
Ongoing	MAP Survey	N/A	Ride-matching for vanpools	Promote better awareness of vanpool option to employers/employees; assist in ride-matching	Ongoing
Ongoing	MAP Survey	N/A	Ride-matching for carpools	Increase awareness of carpool options and help with ride matching	Ongoing
Ongoing	MAP Survey	N/A	HOV Access	Explore HOV priority to/from West Seattle on detour routes	Ongoing
Ongoing	MAP Survey	N/A	Connections to Water Taxi	Evaluate improved parking and transit connections to/from water taxi	Ongoing

Updated: 12/8/22

# 2020 Project List

Delivery Year	Survey Category	#	Project Name	Project Description	Status
2020	Georgetown Survey	28	Airport Way S Safety Improvements	Add speed radar feedback signs	Complete
2020	Georgetown Survey	183	S Michigan St and Corson Ave S	Extend length of northbound right turn lane	Complete
2020	SODO Survey	7	East Marginal Way PBL Improvements	Refresh existing bike lane markings, add delineators and green driveway markings	Complete
2020	SODO Survey	20	BNSF Crossing Improvements	Rail crossing improvements at S Holgate St and S Horton St	Complete
2020	SODO Survey	26	SODO Pothole Repair	Repair potholes along detour routes and other locations	Complete
2020	SODO Survey	207/47420	S Spokane St Bike Improvements	Spot improvements along S Spokane St and the West Seattle Bridge Trail	Complete
2020	South Park Survey	135	South Park Bike and Pedestrian Map	Map of bike and pedestrian routes to access the South Park and 1st Ave S Bridge; Walking map and biking map available online.	Complete
2020	South Park Survey	301	S Cloverdale St Safety Improvements	Add speed radar feedback signs	Complete
2020	South Park Survey	W50	14th Ave S and S Cloverdale St Improvements	Relocate the stop bars and signal detection and expand the width of the south leg crosswalk	Complete
2020	West Seattle Survey	W25	Delridge Way SW and SW Orchard St Signal Improvements	Update signal timing	Complete
2020	West Seattle Survey	W51	West Seattle Arterial Maintenance	Repair potholes on 35th Ave SW, W Marginal Way SW, SW Delridge Way, SW Holden St	Complete

Updated: 12/8/22



# 2020 Project List

Delivery Year	Survey Category	#	Project Name	Project Description	Status
2020	Bike Survey	Multiple	West Seattle Bridge Trail Improvements	Bike improvements along the West Seattle Bridge Trail and S Spokane St	Complete
2020	Bike Survey	B023/B056	East Marginal Way PBL Improvements	Refresh existing bike lane markings, add delineators and green driveway markings	Complete
2020	Freight Survey	F01	2nd Ave SW and Highland Park Way SW Improvements	Refresh pavement markings and replace damaged signs	Complete
2020	Freight Survey	F02	SR 509 NB Off-Ramp Vegetation Maintenance	Trim vegetation at 2nd Ave S to improve sightlines for northbound drivers	Complete
2020	Freight Survey	F03	14th Ave S and S Cloverdale St Improvements	Relocate the stop bars and signal detection and expand the width of the south leg crosswalk	Complete
2020	Freight Survey	F10	West Seattle Bridge Trail Improvements	Bike improvements along the West Seattle Bridge Trail and S Spokane St	Complete
2020	MAP Survey	N/A	Additional transit service (Metro)	Metro adding back routes 55, 56, 57 to better serve Admiral (September 19, 2020)	Complete
2020	MAP Survey	N/A	Transit Service	Revised bus service to accommodate High Bridge closure. Metro published a West Seattle Bridge Closure Transit Action Plan.	Complete
2020	MAP Survey	N/A	Low Bridge Access	Expand access to Low Bridge	Complete
2020	MAP Survey	N/A	Transit Lanes and signal priority	Installed bus lanes on Spokane Street and Delridge Way	Complete
2020	MAP Survey	N/A	Water Taxi Service	Issued RFP for additional boat; funding source needed	Complete

Updated: 12/8/22

# 2021 Project List

Delivery Year	Survey Category	#	Project Name	Project Description	Status
2021	SODO Survey	6	SODO Transit Improvements	Transit-only lane on 1st Ave S, other bus stop improvements	Complete
2021	SODO Survey	91	East Marginal Way S and SW Klickitat Way Improvements	Striping improvements to better organize turning movements	Complete
2021	Georgetown Survey	13	Corson Ave S Safety Improvements	Safety improvements from East Marginal Way S to Airport Way S	Complete
2021	Georgetown Survey	14	S Orcas St Bike Improvements	Bike and pedestrian improvements from East Marginal Way S to Corson Ave S	Complete
2021	Georgetown Survey	46	Airport Way S and S Lucile St Improvements	Pedestrian, bike, transit and vehicular access improvements	Complete
2021	South Park Survey	160	S Cloverdale St and 10th Ave S Improvements	Pedestrian and bike crossing improvements	Complete
2021	South Park Survey	161	S Cloverdale St and 12th Ave S Improvements	Pedestrian and bike crossing improvements	Complete
2021	South Park Survey	162	South Park Stay Healthy Streets	Add Stay Healthy Streets where appropriate in South Park	Complete
2021	West Seattle Survey	W27	8th Ave SW and SW Roxbury St Signal Improvements	Update signal timing and add left turn phase	Complete
2021	West Seattle Survey	W60	8th Ave SW and SW Roxbury St Improvements	Add left turn signal	Complete

Updated: 12/8/22

# 2021 Project List

Delivery Year	Survey Category	#	Project Name	Project Description	Status
2021	Bike Survey	B038/B039	Georgetown to Downtown Bike Connection	Evaluate protected bike lane on Airport Way S or parallel route (continued evaluation by BMP)	Complete
2021	Freight Survey	F06	West Marginal Way SW Improvements	New Walkway	Complete
2021	Freight Survey	F08	Harbor Island Contingency Access	Evaluate contingency access via 16th Ave SW, 13th Ave SW, SW Hanford St, and 11th Ave SW	Complete
2021	West Seattle Survey	W61	15th Ave SW and SW Roxbury St Improvements	Add southbound left turn lane	Complete
2021	SODO Survey	164/205/6121 1	East Marginal Way S Paving Improvements	Improve pavement conditions if grant funding is not awarded	Complete
2021	Bike Survey	B079	21st Ave SW Neighborhood Greenway Improvements	Improvements to 21st Ave SW between West Seattle Bridge and SW Dawson St	Complete
2021	Georgetown Survey	133	Georgetown Home Zone	Limit access to side streets and add traffic calming	Construction
2021	South Park Survey	172	South Park Home Zone	Limit access to side streets and add traffic calming	Construction
2021	West Seattle Survey	W24	Highland Park Home Zone	Limit access to side streets and add traffic calming	Construction
2021	Bike Survey	B027/B055/B060/B076	West Marginal Way SW Improvements	Protected bike lane	Construction
2021	South Park Survey	54	Dallas Ave S and 14th Ave S Improvements	Pedestrian and safety improvements	Construction

Updated: 12/8/22

# 2022 Project List

Delivery Year	#	Project Name	Project Description	Status
2022	22-84	S Albro Pl Traffic calming	Radar feedback speed sign trailer rental	Complete
2022	22-77	S Hardy St Sidewalk Repairs	Repair sidewalks on S Hardy St east of S Albro Pl	Complete
2022	22-22	14th Ave S and S Cloverdale St Signal	Install crossing upgrades at 14th Ave S and S Cloverdale St	Complete
2022	22-73	17th Ave SW and SW Henderson St RRFB	Install RRFB at intersection of 17th Ave SW and SW Henderson St	Complete
2022	22-95	Sylvan Way SW Low-Cost Sidewalk	Install low-cost walkway or other pedestrian connection on Sylvan Way SW south of SW Holly St	Complete
2022	22-58	16th and Cambridge Pedestrian Crossings	Improve crossing at 16th Ave SW and SW Cambridge St	Complete
2022	22-24	Dallas Ave S Sidewalk Improvements	Repair sidewalks on Dallas Ave S east of 10 <sup>th</sup> Ave S	Design
2022	22-25	Lighting at Cesar Chavez Park	Install new or upgrade existing lighting near Cesar Chavez Park on 7 <sup>th</sup> Ave S	Complete
2022	22-30	South Park Skate Park Lighting	Install new or upgrade existing lighting on S Cloverdale St west of 8 <sup>th</sup> Ave S	Complete
2022	22-00	14th Ave S safety project	Corridor improvements to increase visibility and slow down drivers on 14th Ave S	Complete

Updated: 12/8/22



# Projects Not Recommended to Advance

Delivery Year	Survey Category	#	Project Name	Project Description	Status
2021	Georgetown Survey	188	SR 509 SB On-Ramp Improvement	Add second lane on southbound ramp from S Michigan St	Not Recommended to Advance <sup>1</sup>
2021	SODO Survey	36	Chelan 5-Way Intersection Bypass	Explore opportunities for Low Bridge access using the ramp west of Fire Station 36	Not Recommended to Advance <sup>2</sup>
2021	West Seattle Survey	W20	SR 509 NB On-Ramp Improvement	Increase the number of lanes on West Marginal Way S to access 1st Ave Bridge NB on-ramp	Not Recommended to Advance <sup>3</sup>
2021	West Seattle Survey	W28	Highland Park Way SW and SW Holden St Improvement	Add extra traction on the uphill, southbound lane on Highland Park Way SW	Not Recommended to Advance <sup>4</sup>

<sup>1</sup> Project is not recommended to advance since it does not meet WSDOT's design standards.

<sup>2</sup> Project is not recommended to advance due to potential conflicts with repair efforts and for having high risk of bike, pedestrians, and vehicles accessing the high bridge at the ramps. We will continue to monitor this area for potential transit and bike improvements.

<sup>3</sup> Project is not recommended to advance due to impacts to mainline SR 509.

<sup>4</sup> Project is not recommended to advance due to existing pavement design and future challenges with updating roadway markings. Northbound left turn phase added to address collision patterns.

Updated: 12/8/22

# Georgetown Project List 2020-2021

Delivery Year	Survey Category	#	Project Name	Project Description	Status
2020	Georgetown Survey	183	S Michigan St and Corson Ave S	Extend length of northbound right turn lane	Complete
2020	Georgetown Survey	28	Airport Way S Safety Improvements	Add speed radar feedback signs	Complete
2021	Georgetown Survey	13	Corson Ave S Safety Improvements	Safety improvements from East Marginal Way S to Airport Way S	Complete
2021	Georgetown Survey	14	S Orcas St Bike Improvements	Bike and pedestrian improvements from East Marginal Way S to Corson Ave S	Complete
2021	Georgetown Survey	46	Airport Way S and S Lucile St Improvements	Pedestrian, bike, transit and vehicular access improvements	Complete
2021	Georgetown Survey	133	Georgetown Home Zone	Limit access to side streets and add traffic calming	Construction
Ongoing	Georgetown Survey	46920	S Michigan St ITS Improvements	Intelligent Transportation System (ITS) improvements	Ongoing
Ongoing	Georgetown Survey	156	1st Ave S Bridge Signal Improvements	Improve signal timing at East Marginal Way S, 4th Ave S, and 1st Ave S	Ongoing
Ongoing	Georgetown Survey	182-1	S Michigan St Signal Improvements	Improve signal progression for S Michigan St	Ongoing
Ongoing	Georgetown Survey	182-2	S Michigan St Signal Improvements	Improve signal timing	Ongoing
2021	Georgetown Survey	188	SR 509 SB On-Ramp Improvement	Add second lane on southbound ramp from S Michigan St	Not Recommended to Advance <sup>1</sup>

<sup>1</sup>Project is not recommended to advance since it does not meet WSDOT's design standards.

Updated: 12/8/22

# SODO Project List 2020-2021

Delivery Year	Survey Category	#	Project Name	Project Description	Status
2020	SODO Survey	7	East Marginal Way PBL Improvements	Refresh existing bike lane markings, add delineators and green driveway markings	Complete
2020	SODO Survey	20	BNSF Crossing Improvements	Rail crossing improvements at S Holgate St and S Horton St	Complete
2020	SODO Survey	26	SODO Pothole Repair	Repair potholes along detour routes and other locations	Complete
2020	SODO Survey	207/47420	S Spokane St Bike Improvements	Spot improvements along S Spokane St and the West Seattle Bridge Trail	Complete
2021	SODO Survey	6	SODO Transit Improvements	Transit-only lane on 1st Ave S, other bus stop improvements	Complete
2021	SODO Survey	91	East Marginal Way S and SW Klickitat Way Improvements	Striping improvements to better organize turning movements	Complete
Ongoing	SODO Survey	164/205/6121 1	East Marginal Way S Paving Improvements	Improve pavement conditions if grant funding is not awarded	Construction
Ongoing	SODO Survey	24	SODO Drainage Improvements	Work with Seattle Public Utilities to monitor drainage and ponding issues	Ongoing
2021	SODO Survey	36	Chelan 5-Way Intersection Bypass	Explore opportunities for Low Bridge access using the ramp west of Fire Station 36	Not Recommended to Advance <sup>1</sup>

<sup>1</sup>Project is not recommended to advance due to potential conflicts with repair efforts and for having high risk of bike, pedestrians, and vehicles accessing the high bridge at the ramps. We will continue to monitor this area for potential transit and bike improvements.

Updated: 12/8/22

# South Park Project List 2020-2021

Delivery Year	Survey Category	#	Project Name	Project Description	Status
2020	South Park Survey	135	South Park Bike and Pedestrian Map	Map of bike and pedestrian routes to access the South Park and 1st Ave S Bridge; Walking map and biking map available online.	Complete
2020	South Park Survey	301	S Cloverdale St Safety Improvements	Add speed radar feedback signs	Complete
2020	South Park Survey	W50	14th Ave S and S Cloverdale St Improvements	Relocate the stop bars and signal detection and expand the width of the south leg crosswalk	Complete
2021	South Park Survey	160	S Cloverdale St and 10th Ave S Improvements	Pedestrian and bike crossing improvements	Complete
2021	South Park Survey	161	S Cloverdale St and 12th Ave S Improvements	Pedestrian and bike crossing improvements	Complete
2021	South Park Survey	172	South Park Stay Healthy Streets	Add Stay Healthy Streets where appropriate in South Park	Complete
2021	South Park Survey	169	South Park Home Zone	Limit access to side streets and add traffic calming	Construction
2021	South Park Survey	54	Dallas Ave S and 14th Ave S Improvements	Pedestrian and safety improvements	Construction
Ongoing	South Park Survey	139	4th Ave S and S Michigan St Signal Improvements	Improve signal timing for S Michigan St	Ongoing
Ongoing	South Park Survey	143	Detour Route Signal Improvements	Improve signal timing on detour routes	Ongoing

Updated: 12/8/22



# West Seattle Project List 2020-2021

## Roxhill, Highland Park, Riverview, and South Delridge

Delivery Year	Survey Category	#	Project Name	Project Description	Status
2020	West Seattle Survey	W25	Delridge Way SW and SW Orchard St Signal Improvements	Update signal timing	Complete
2020	West Seattle Survey	W51	West Seattle Arterial Maintenance	Repair potholes on 35th Ave SW, W Marginal Way SW, SW Delridge Way, SW Holden St	Complete
2021	West Seattle Survey	W27	8th Ave SW and SW Roxbury St Signal Improvements	Update signal timing and add left turn phase	Complete
2021	West Seattle Survey	W60	8th Ave SW and SW Roxbury St Improvements	Add left turn signal	Complete
2021	West Seattle Survey	W61	15th Ave SW and SW Roxbury St Improvements	Add southbound left turn lane	Complete
2021	West Seattle Survey	W24	Highland Park Home Zone	Limit access to side streets and add traffic calming	Construction
2021	West Seattle Survey	W20	SR 509 NB On-Ramp Improvement	Increase the number of lanes on West Marginal Way S to access 1st Ave Bridge NB on-ramp	Not Recommended to Advance <sup>1</sup>
2021	West Seattle Survey	W28	Highland Park Way SW and SW Holden St Improvement	Add extra traction on the uphill, southbound lane on Highland Park Way SW	Not Recommended to Advance <sup>2</sup>

<sup>1</sup> This project is not recommended to advance due to impacts to mainline SR 509.

<sup>2</sup> Project is not recommended to advance due to existing pavement design and future challenges with updating roadway markings. Northbound left turn phase added to address collision patterns.

Updated: 12/8/22

# Freight Project List 2020-2021

Delivery Year	Survey Category	#	Project Name	Project Description	Status
2020	Freight Survey	F01	2nd Ave SW and Highland Park Way SW Improvements	Refresh pavement markings and replace damaged signs	Complete
2020	Freight Survey	F02	SR 509 NB Off-Ramp Vegetation Maintenance	Trim vegetation at 2nd Ave S to improve sightlines for northbound drivers	Complete
2020	Freight Survey	F03	14th Ave S and S Cloverdale St Improvements	Relocate the stop bars and signal detection and expand the width of the south leg crosswalk	Complete
2020	Freight Survey	F10	West Seattle Bridge Trail Improvements	Bike improvements along the West Seattle Bridge Trail and S Spokane St	Complete
2021	Freight Survey	F06	West Marginal Way SW Improvements	New walkway	Complete
2021	Freight Survey	F08	Harbor Island Contingency Access	Evaluate contingency access via 16th Ave SW, 13th Ave SW, SW Hanford St, and 11th Ave SW	Complete
2021	SODO Survey	91	East Marginal Way S and SW Klickitat Way Improvements	Striping improvements to better organize turning movements	Complete
Ongoing	Freight Survey	F09	Alaskan Way Signal Improvements	Improve signal timing at Madison St and Marion St	Ongoing
Ongoing	Freight Survey	F23	East Marginal Way S Access Restrictions	Assess access restrictions between S Spokane St and S Atlantic St	Ongoing

Updated: 12/8/22

# Bike Project List 2020-2021

Delivery Year	Survey Category	#	Project Name	Project Description	Status
2020	Bike Survey	Multiple	West Seattle Bridge Trail Improvements	Bike improvements along the West Seattle Bridge Trail and S Spokane St	Complete
2020	Bike Survey	B023/B056	East Marginal Way PBL Improvements	Refresh existing bike lane markings, add delineators and green driveway markings	Complete
2021	Bike Survey	B038/B039	Georgetown to Downtown Bike Connection	Evaluate protected bike lane on Airport Way S or parallel routes	Complete
2021	Bike Survey	B027/B055/B060/B076	West Marginal Way SW Improvements	New protected bike lane	Construction
2021	Bike Survey	B079	21st Ave SW Neighborhood Greenway Improvements	Improvements to 21st Ave SW between West Seattle Bridge and SW Dawson St	Complete

Updated: 10/7/22

# Mobility Action Plan Project List 2020-2021

Delivery Year	Survey Category	#	Project Name	Project Description	Status
2020	MAP Survey	N/A	Additional transit service (Metro)	Metro adding back routes 55, 56, 57 to better serve Admiral	Complete
2020	MAP Survey	N/A	Transit Service	Revised bus service to accommodate High Bridge closure. Metro published a West Seattle Bridge Closure Transit Action Plan.	Complete
2020	MAP Survey	N/A	Low Bridge Access	Expand access to Low Bridge	Complete
2020	MAP Survey	N/A	Transit Lanes and signal priority	Installed bus lanes on Spokane Street and Delridge Way	Complete
2020	MAP Survey	N/A	Water Taxi Service	Issued RFP for additional boat; funding source needed	Complete
2021	MAP Survey	N/A	HOV Access	Explore HOV priority to/from West Seattle on detour routes	Ongoing
2021	MAP Survey	N/A	Connections to Water Taxi	Evaluate improved parking and transit connections to water taxi	Ongoing
2021	MAP Survey	N/A	Ride-matching for carpools	Increase awareness of carpool options and help with ride matching	Ongoing
Ongoing	MAP Survey	N/A	Evaluate New/Revised Transit Connections	Evaluate new/revised routes to reflect new trip patterns	Ongoing
Ongoing	MAP Survey	N/A	Ride-matching for vanpools	Promote better awareness of vanpool option to employers/employees; assist in ride-matching	Ongoing
Ongoing	MAP Survey	N/A	Low Bridge Access	Evaluate continued access to Low Bridge	Ongoing
Ongoing	MAP Survey	N/A	Employer Coordination	Work with employers to maintain and support work-from-home options	Ongoing
Ongoing	MAP Survey	N/A	Expand shared employer shuttles	Through King County Metro's Shared Employer Shuttle Program expand access to shuttles for smaller employers	Ongoing

Updated: 12/8/22